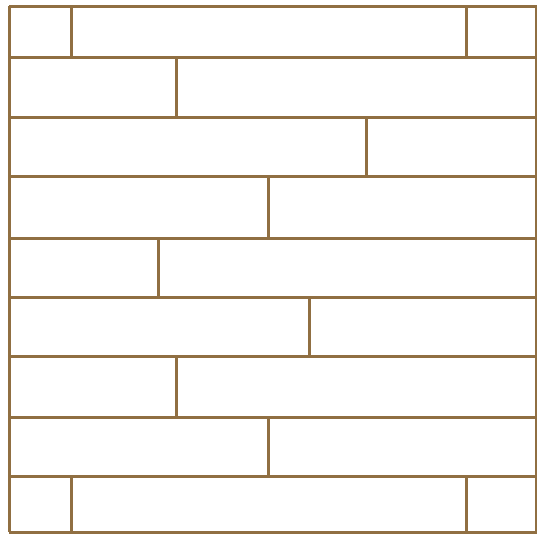


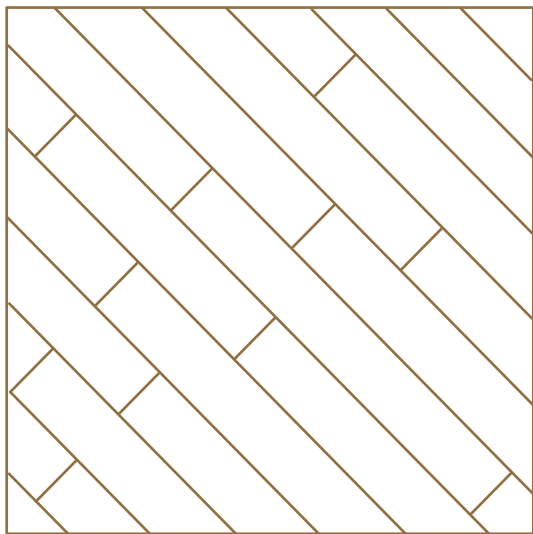
Installation types

DECO WOOD Collection

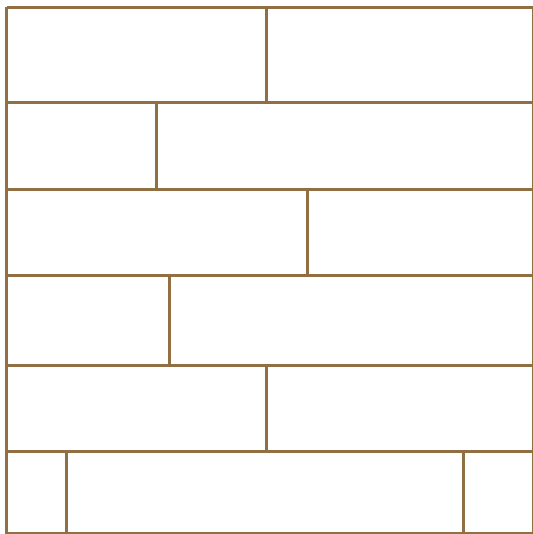




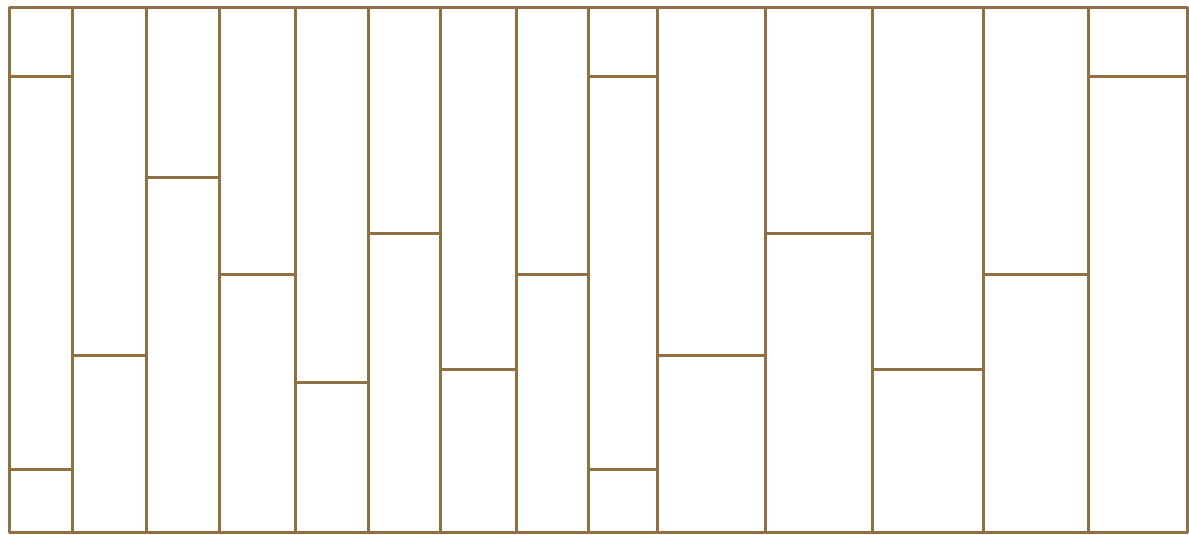
RANDOM



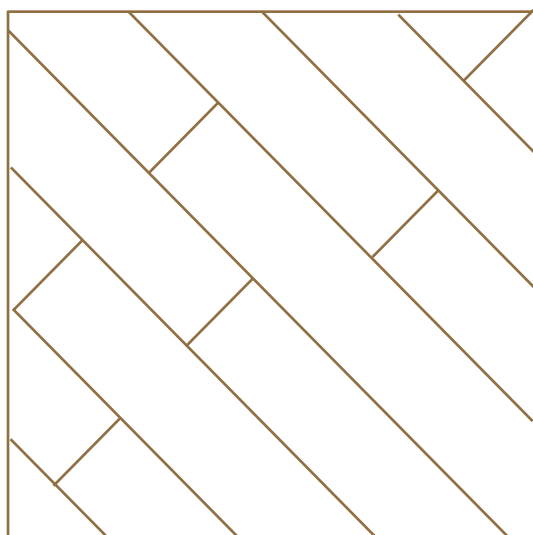
45° RANDOM



SUBWAY



PAIRS SEAMLESSY

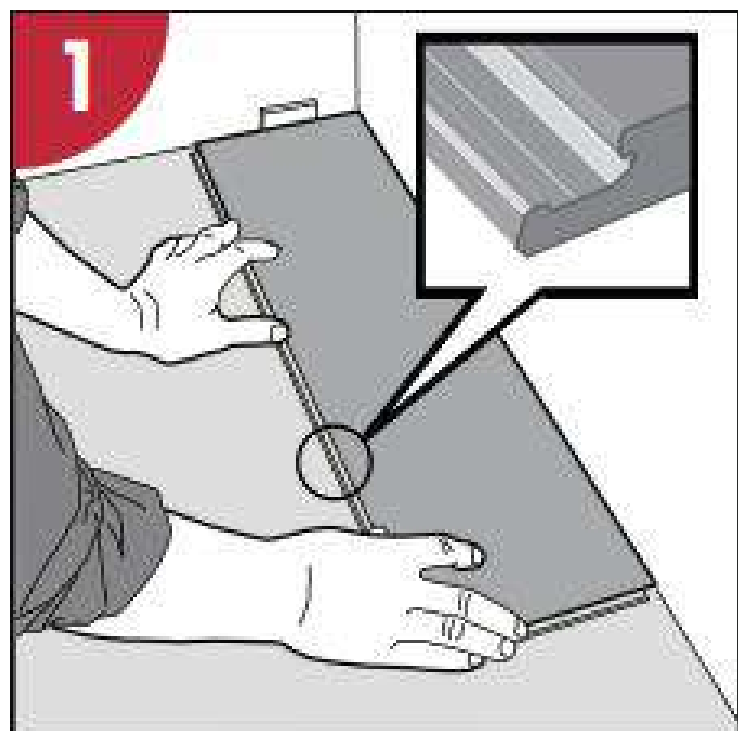


45° SUBWAY

Installation instruction

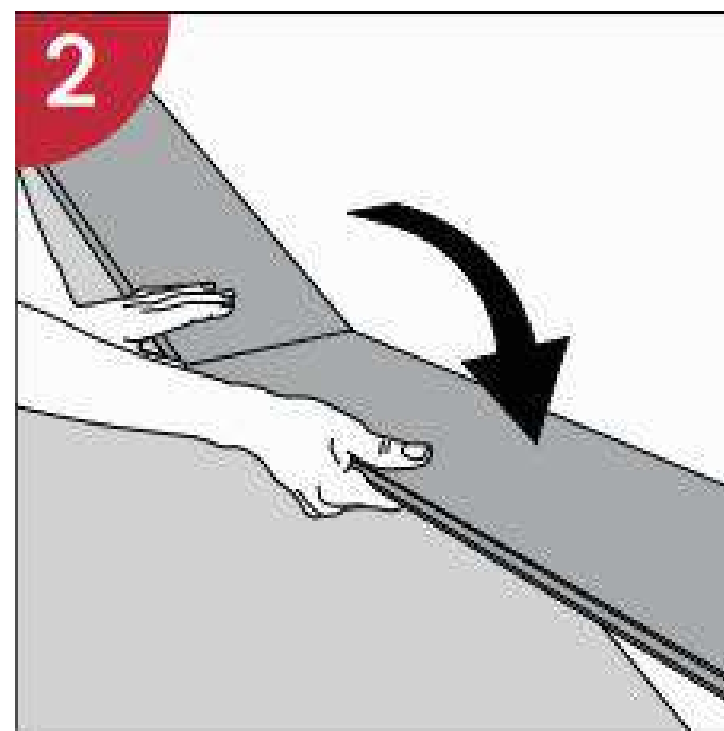
DECO WOOD Collection





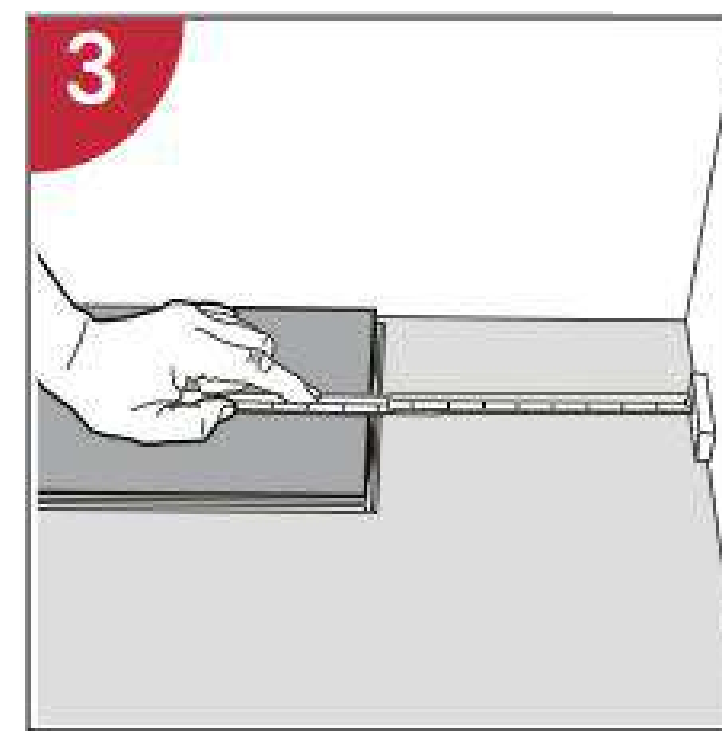
First plank, first row. Place a distance 8 mm thickness to the left and position the plank against the wall. Later, after 3 rows, you can easily position the flooring against the front wall with distances 8 mm.

Prior to installation, measure the width of the room to check if the first row should preferably be cut length wise to get more equal width of the first and last rows planks.



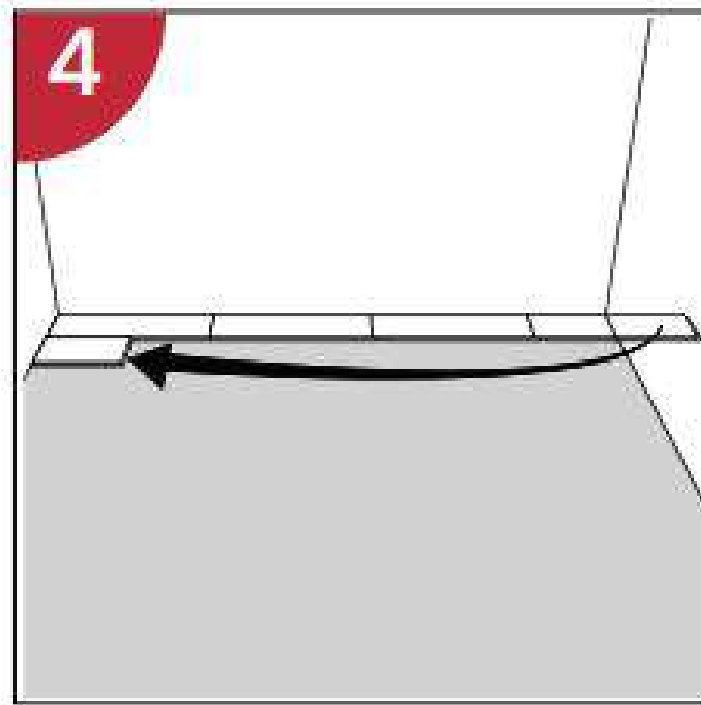
Second plank, first row
Press the short end of the next floor board at an angle to the first one, and then lay down.

Complete the first row in the same way.

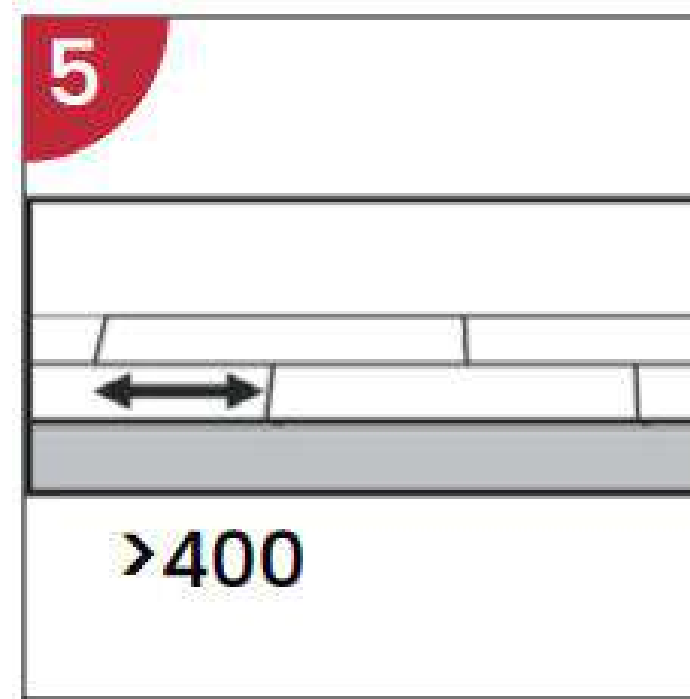


At the end of the first row, put a distance 8 mm, to the wall and measure the length of the last plank to fit.

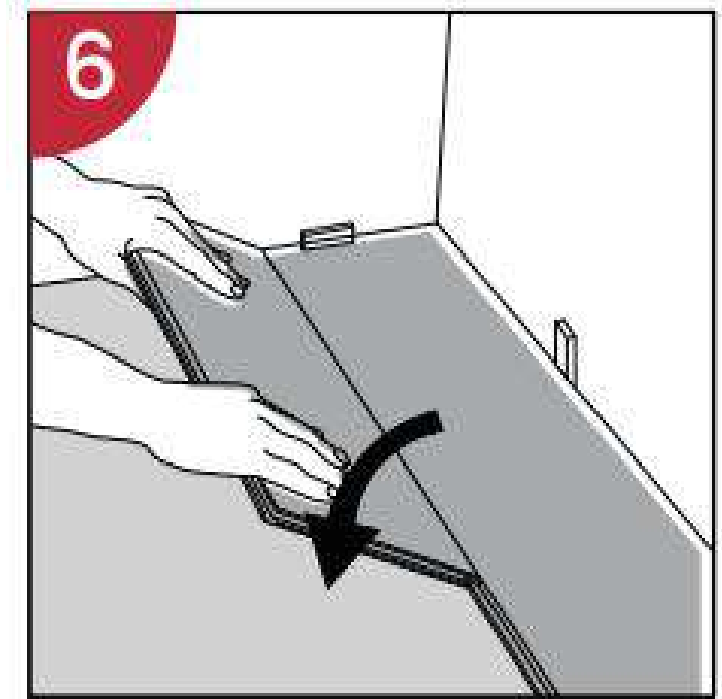
Cut the last panel to correct length, recommended min length is two times the width of the plank.



Second row. Position the remaining part of the first row's last plank as first plank of second row.
Keep again two times the width as min length.
Put a distance against the wall.



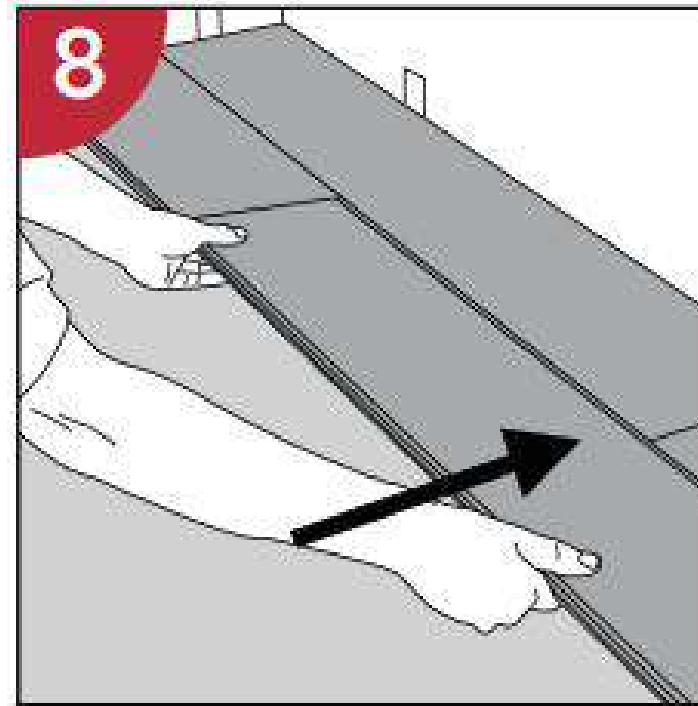
General. Distances between short ends. Minimum distance between short ends of planks in parallel rows shall not be less than about two times the width of the plank.



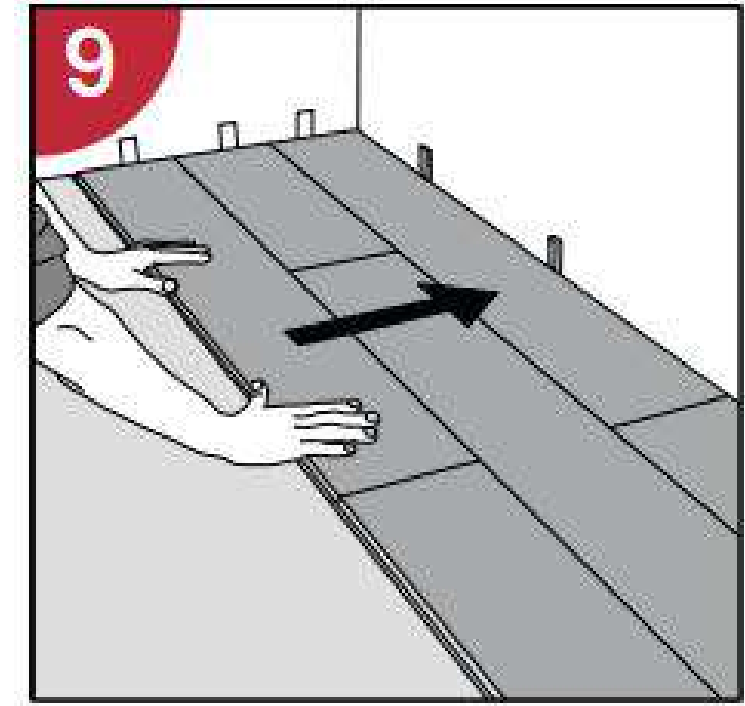
Place the floorboard an angle against the floorboard in the previous row, press forward and fold down at the same time. Leave the panel in a somewhat up angled position where the panels start to loc. To make this further easier, a wedge with the suitable angle can be placed under the plank near the short side joint as support.



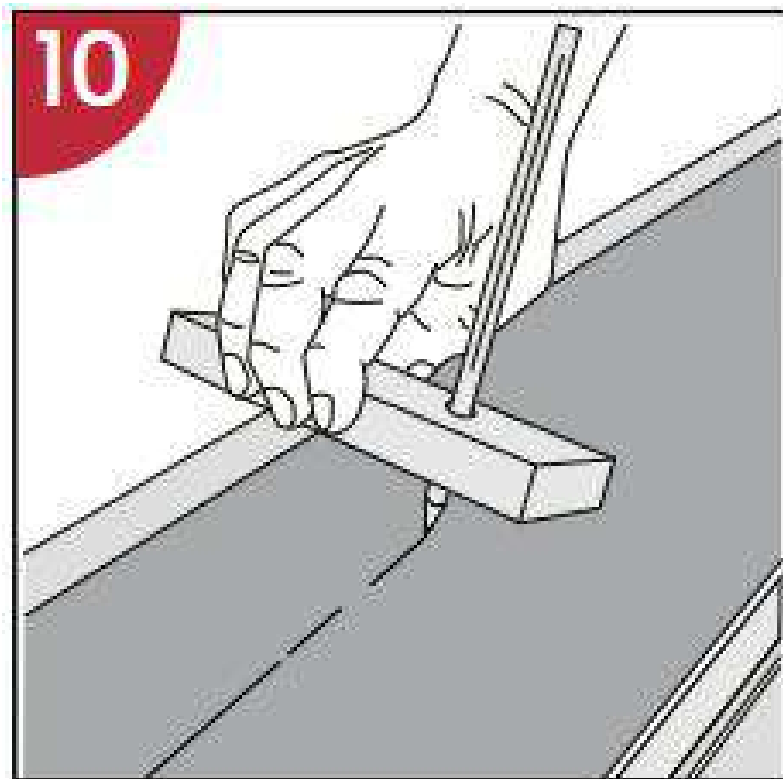
Second plank second row. Place the short end of the floorboard at an angle against the previous installed floorboard and fold down all the way.



Push to slide the plank against the row in front so it aligns with the first plank. Put it down like with the first plank when the floorboards are positioned tightly together. The first/previous plank can now be folded completely down to horizontal position and if a wedge is used it can be moved to the next short end joint.



After 2-3 rows. Adjust the distance to the front wall by placing distances 8 mm. Keep the distances in position during the entire time of installation and remove once the installation is completed.



If the wall is uneven, the floorboards must be adapted to its contours. Mark the floor boards with the contour of the wall. Do not forget to leave ca 8 mm space to the wall.

This procedure shall be used also for the first row if necessary.